

DALIA Series

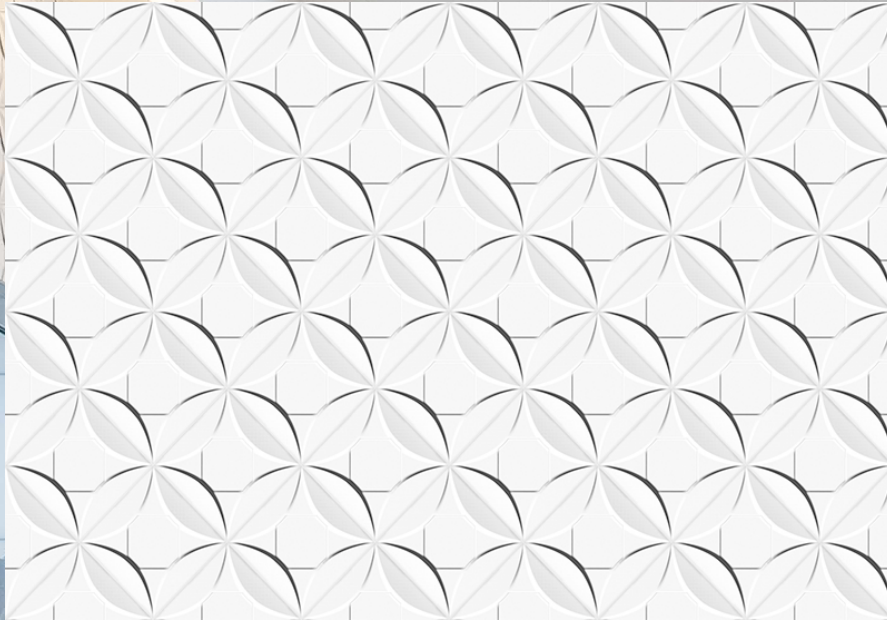
GLAZED WALL

alphatile & stone
a division of olympiatile+stone

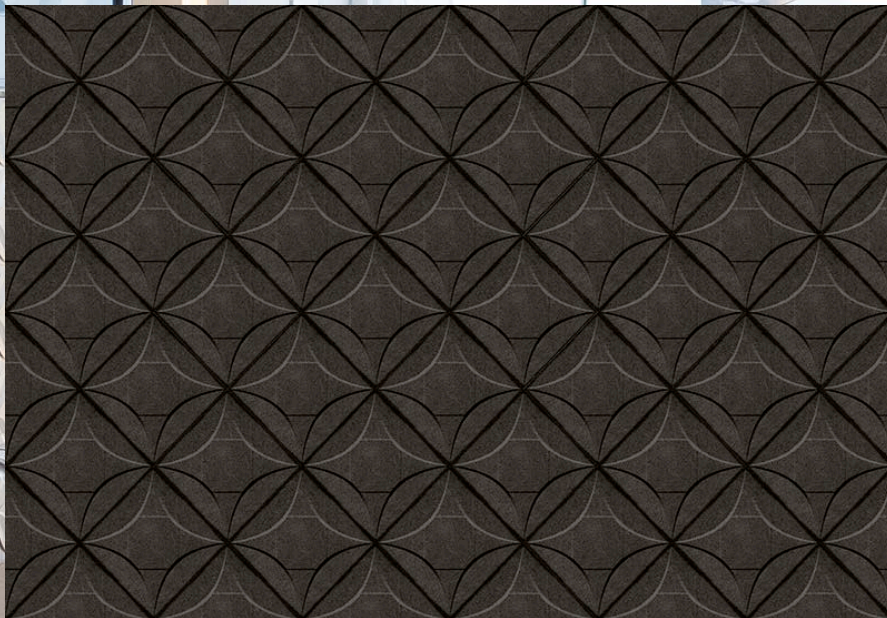


DALIA Series

Available Colors



BRANCO (White)
43.7 x 63.1 cm
(17" x 25")
Matte Finish
CE.DL.BRN.1725.MT



NERO (Charcoal)
43.7 x 63.1 cm
(17" x 25")
Matte Finish
CE.DL.NRO.1725.MT

Not all items shown in this document are part of Alpha's stocking program, but are available on a special order basis from the factory. For special orders, please contact your Alpha Tile Sales Representative.

alphatile & stone 
a division of olympiatile+stone

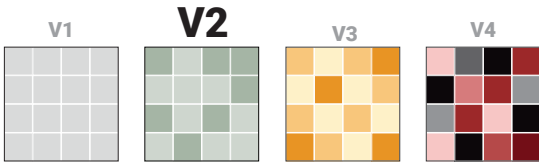
A beautiful collection of 3D wall tiles. It can be installed in any residential and commercial interior wall application, giving the space a contemporary feel.

NERO (Charcoal)

alphatile & stone 
a division of olympiatile+stone



Color Variation



Member



Member of Canada Green Building Council



Member of U.S. Green Building Council



The Terrazzo, Tile, and Marble Association of Canada



Ceramic Tile Distributors of America (CTDA)



Marble Institute of America

For information concerning LEED, please contact our Sales Representative

Examples of Recommended Applications

Residential



Commercial



Indoor



Wall



Packing Details

TILE SIZE	PC/BOX	SF/BOX	LB/BOX	BOX/PAL
17" x 25" Matte	6	17.76	64.80	48



"MORE" Surface Care Product Guide

Task	Product Recommendation	Dilution with Water	Frequency
Grout Sealing	MORE™ Grout, Ceramic & Porcelain Sealer	Ready to use	Commercial: 1-3 Years Residential: 5-8 Years
Daily Maintenance	MORE™ Stone and Tile Cleaner	1 : 128 Ratio	Daily
Deep Cleaning	MORE™ Alkaline Cleaner	1 : 4 Ratio	As Needed
Grout Haze- Cementitious	MORE™ Acidic Cleaner	1 : 4 Ratio	As Needed
Grout Haze - Epoxy / Urethane	MORE™ Coating Stripper*	Ready to use	As Needed

*Always test in an inconspicuous area to make sure the product is achieving the desired results and is not damaging the finish of the surface.

alphatile & stone
a division of olympiatile+stone

Tampa

2443 East Meadow Blvd.
Tampa, FL 33619
(813) 620-9000
(800) 785-9000

Fort Myers

10898-A Metro Parkway
Ft. Myers, FL 33966
(239) 275-8288
(800) 785-8288

Sarasota

1808 Whitfield Ave.
Sarasota, FL 34243
(941) 727-7433
(800) 785-3484



www.alphatile.com